

DRM80/100

Door Rails

& Fixed Panel Rails

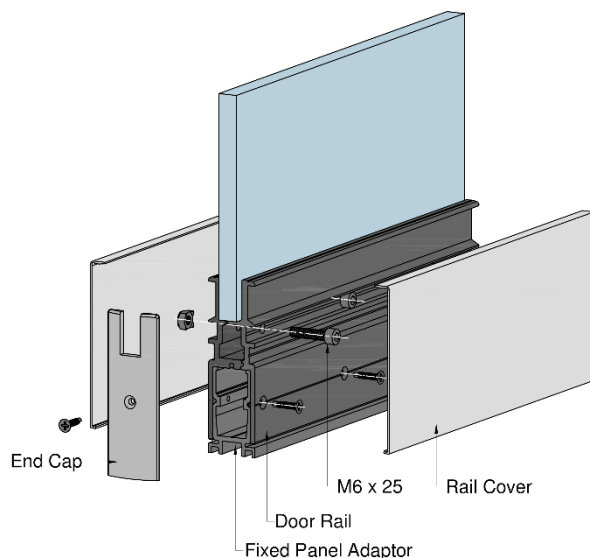


P&M DRM Door Rails is made up of 2-piece extruded aluminium clamping system that are tightened with cap screws at 100mm centre to centre. This system is suitable for the installation of extreme heavy duty wide doors. There are two heights of 80mm (DRM80) and 100mm (DRM100) to choose from and in lengths based on your requirement.

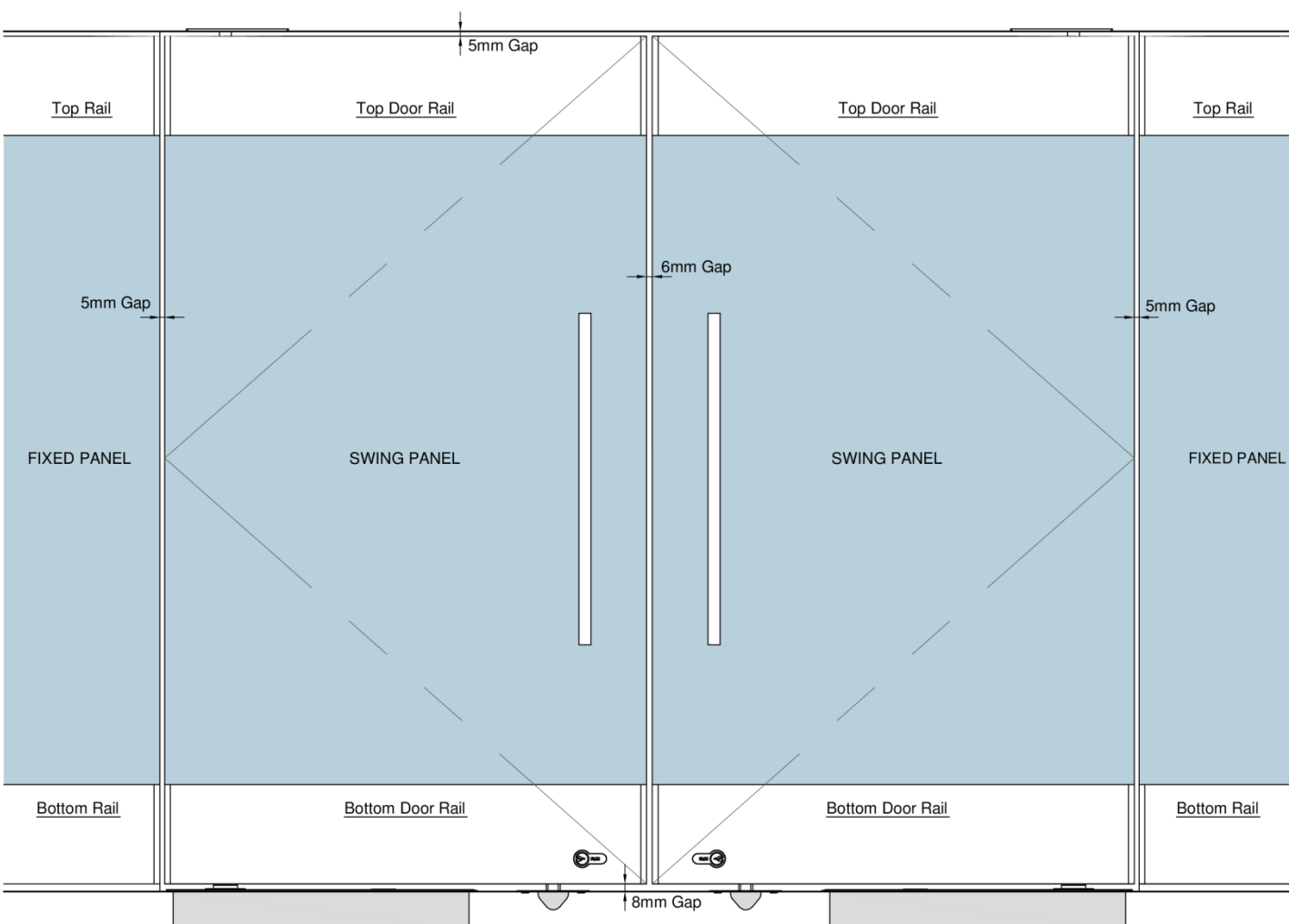
With its clamping efficiency carefully considered, P&M DRM Door rails does not require any glass preparation and can be supplied for various glass thickness such as 10/12/15/19/21mm. In addition, you have a choice of both aluminium snap-on or stainless steel rail-covers in various finish.

P&M Door Rails are also available with security locking devices with Euro-Profile key cylinders or Thumb-turn cylinders that can be installed in either or both top and bottom rails.

To complete the aesthetic facade of glass panels, door rails can also be used for fixed glass panels.



Typical Door Layout Dimension



DRM80

DRM80 Door Rails is available with the following standard components:

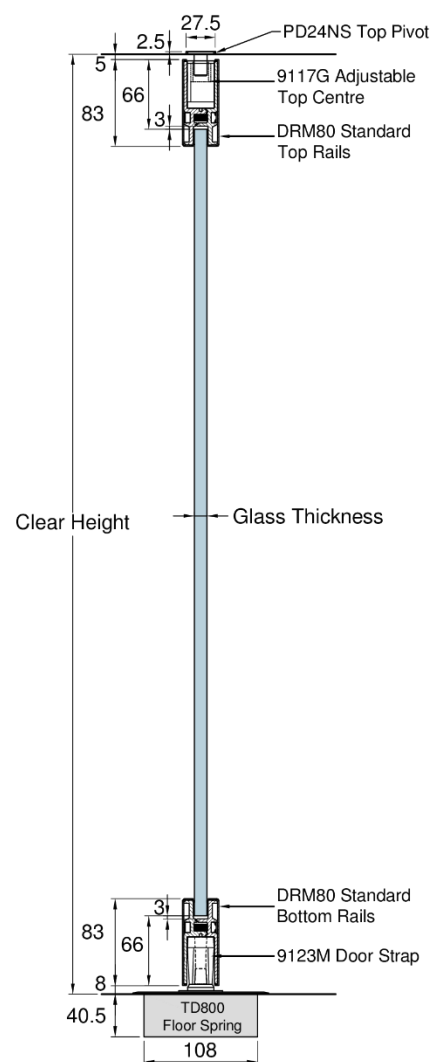
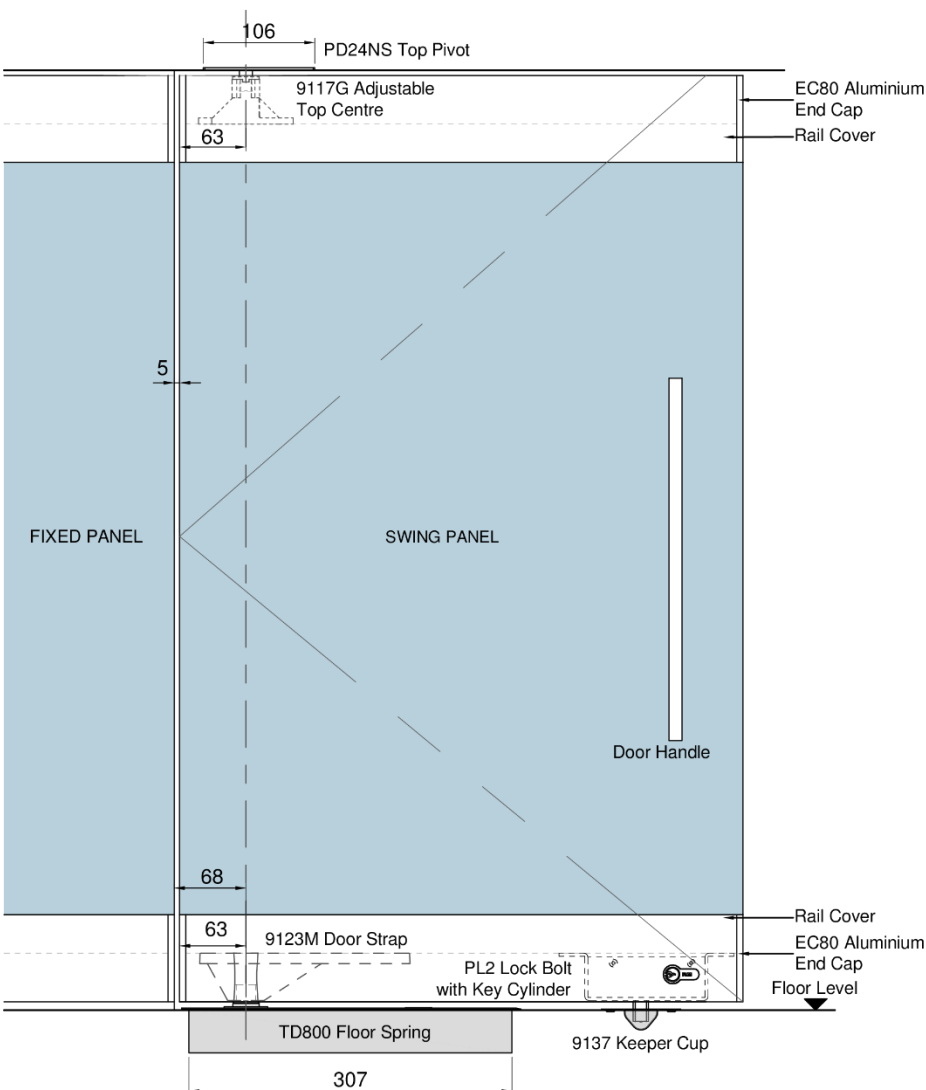
- DRM80 rails
- 9116 Retractable top pivot
- 9117G Adjustable top centre or PD24NS top pivot
- 9123M Door strap
- PL2 Lock bolt
- PM88 Euro-Profile key cylinder
- 9137 Keeper cup

Note:

Usage of Door Rails will determine the specific components required, therefore it will differ from the listed standard components.

Upon order, please specify the following:

- Usage of Door Rails
 - Floor Spring
 - Overhead Concealed Door Closer
 - Free Pivot Door
- Length of Door Rails
 - (Glass panel width is required)
- Door Rails Covers
 - Snap-On Aluminium Cover
 - Brushed Satin aluminium finish (LXG1.2)
 - Natural Anodised aluminium finish
 - Stainless Steel Cover SUS304
 - Polished stainless steel finish
 - Satin stainless steel finish
 - * SUS316 stainless steel cover is available subject to availability.
- Glass Thickness
 - (10mm /12mm)
- Key Combinations
 - (Independent / Key-Alike)



DRM100

DRM100 Door Rails is available with the following standard components:

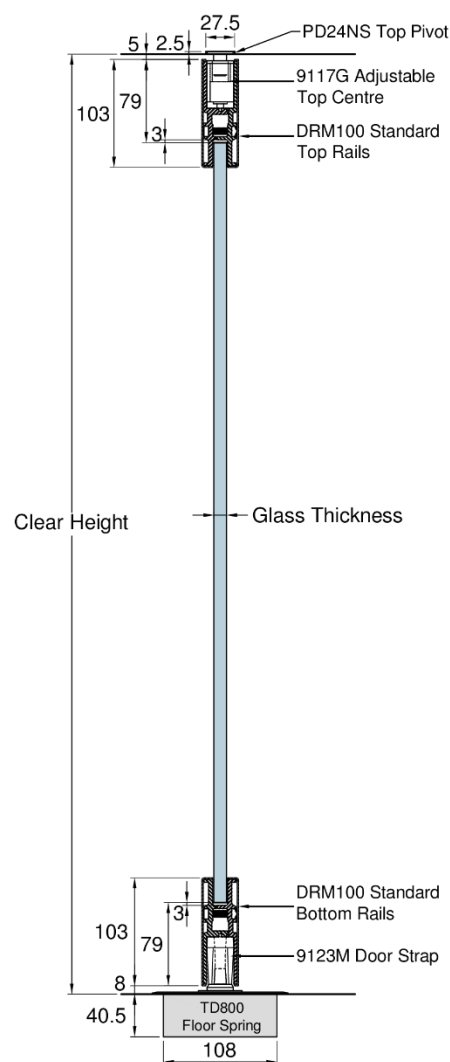
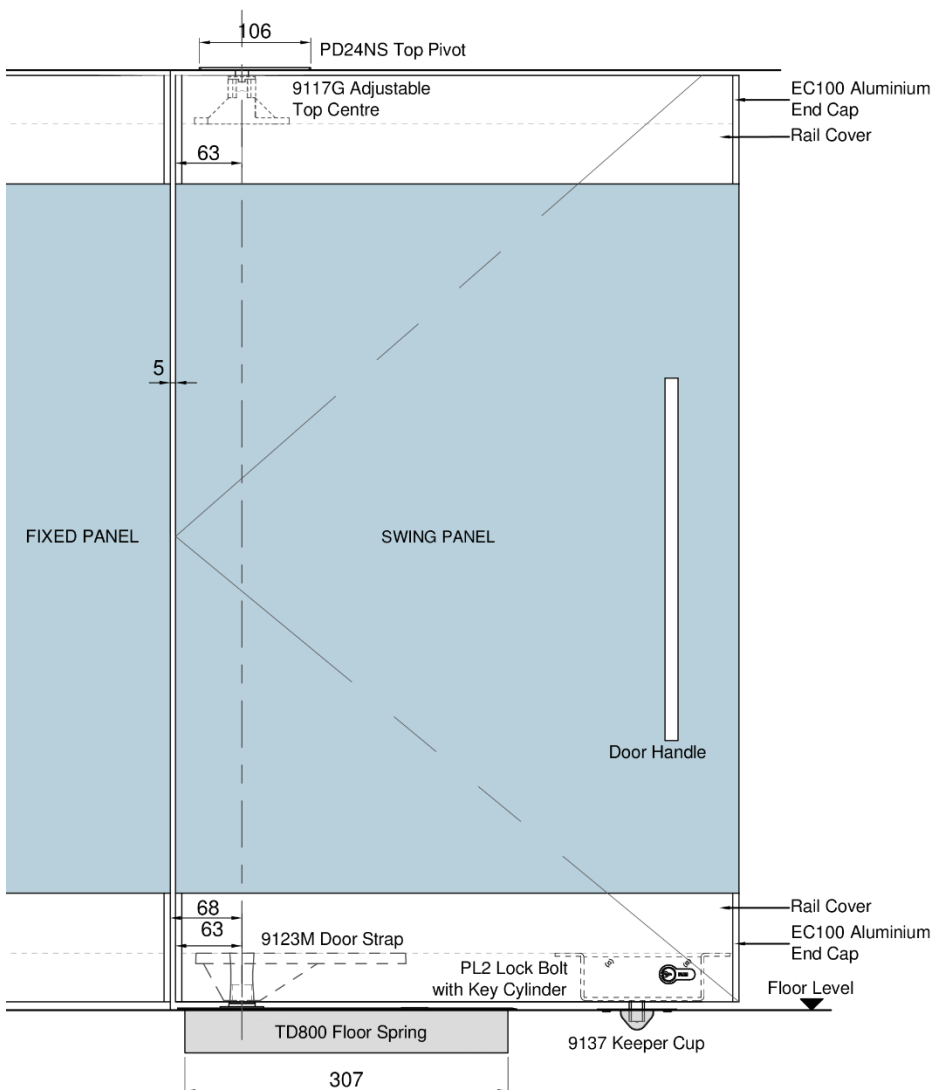
- DRM100 rail
- 9116 Retractable top pivot
- 9117G Adjustable top centre or PD24NS top pivot
- 9123M Door strap
- PL2 Lock bolt
- PM88 Euro-Profile key cylinder
- 9137 Keeper cup

Note:

Usage of Door Rails will determine the specific components required, therefore it will differ from the listed standard components.

Upon order, please specify the following:

- Usage of Door Rails
 - Floor Spring
 - Overhead Concealed Door Closer
 - Free Pivot Door
- Length of Door Rails
 - (Glass panel width is required)
- Door Rails Covers
 - Snap-On Aluminium Cover
 - Brushed Satin aluminium finish (LXG1.2)
 - Natural anodised aluminium finish
 - Stainless Steel Cover SUS304
 - Polished stainless steel finish
 - Satin stainless steel finish
 - * SUS316 stainless steel cover is available subject to availability.
- Glass Thickness
 - (10mm /12mm /13.52mm /15mm /15.52mm /17.52mm / 19mm)
- Key Combinations
 - (Independent / Key-Alike)



FIXED PANEL

Rail for Fixed panel is designed to:

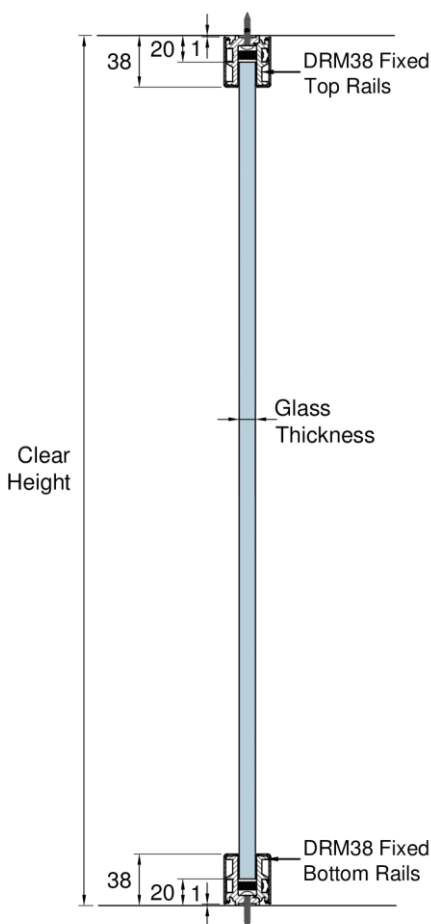
- facilitate ease of installation of fixed glass panel
- eliminate embedding work for fixed glass panel
- complement the aesthetic facade of fixed glass panel

Note:

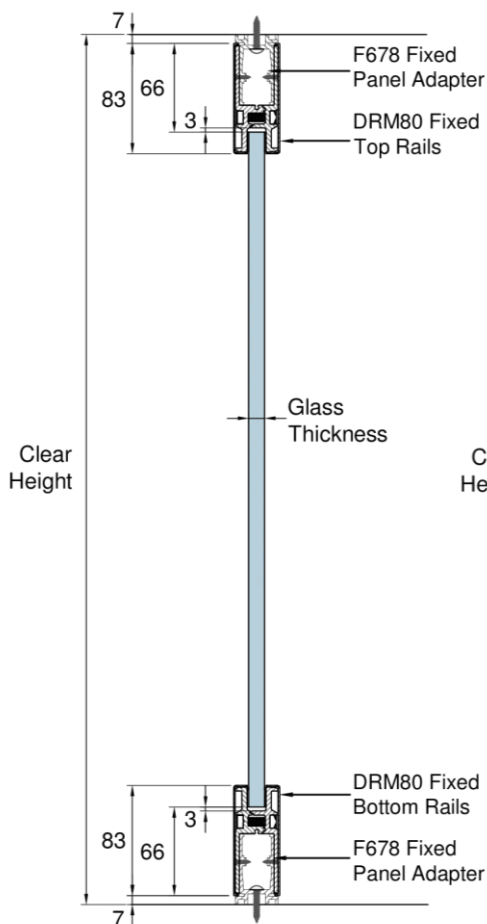
- SUS316 stainless steel cover is available subject to availability
- To complete the aesthetic façade, DRM80 and DRM100 can also be used as fixed panel to form an alignment with the door rail.

Upon order, please specify the following:

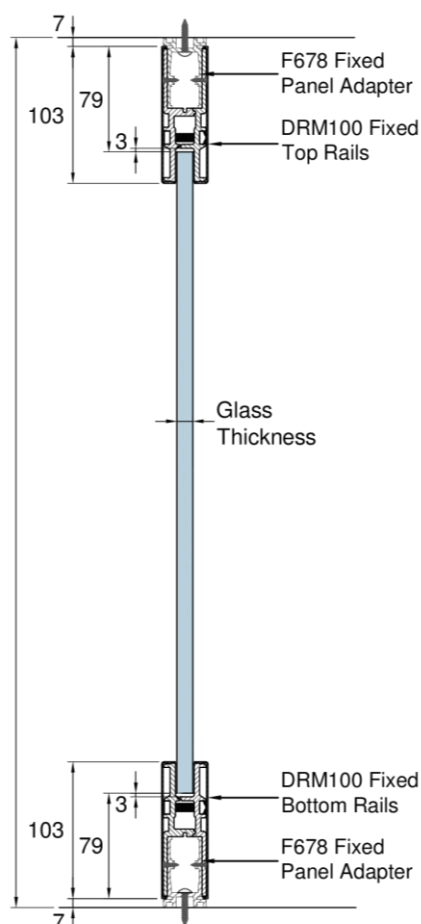
- Usage of Door Rails
 - DRM38
 - DRM80
 - DRM100
- Length of Fixed Rails
(Glass panel width is required)
- Door Rails Covers
 - Snap-On Aluminium Cover
 - Brushed Satin aluminium finish (LXG1.2)
 - Natural Anodised aluminium finish
 - Stainless Steel Cover SUS304
 - Polished stainless steel finish
 - Satin stainless steel finish
- * SUS316 stainless steel cover is available subject to availability.
- Glass Thickness
(10/12mm)



DRM38 Fixed Panel Rails



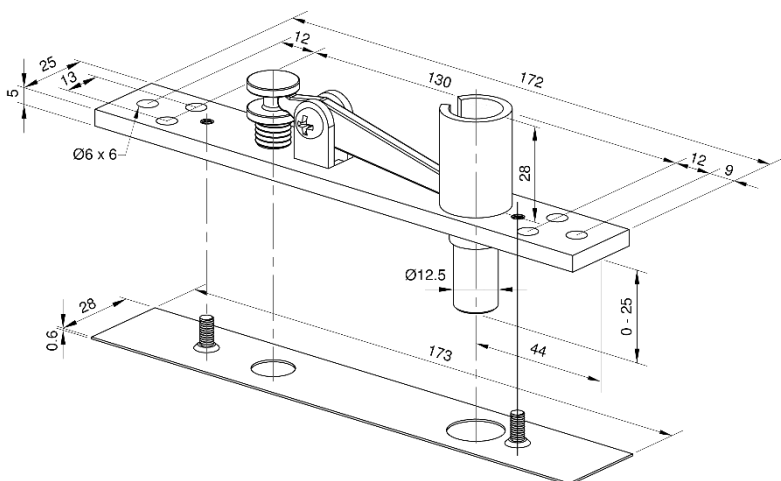
DRM80 Fixed Panel Rails



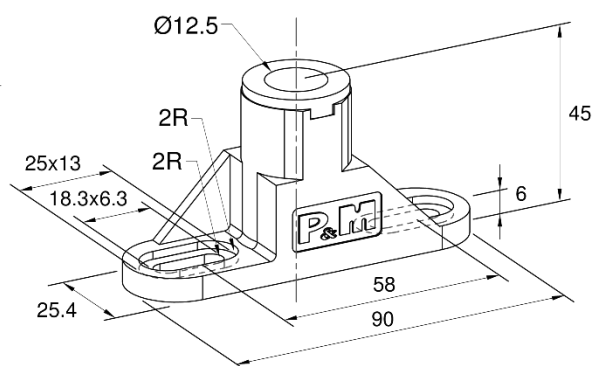
DRM100 Fixed Panel Rails

Top Rail Accessories

9116 Retractable Top Pivot

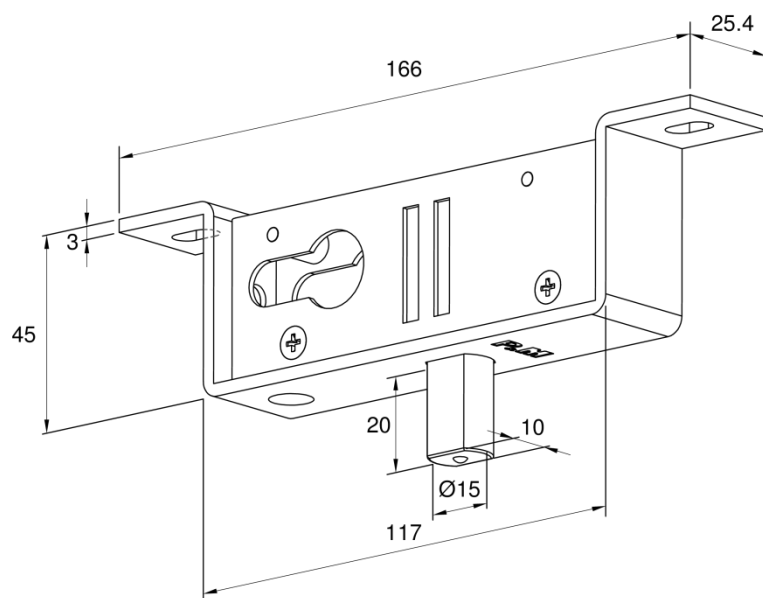


9117G Adjustable Top Centre

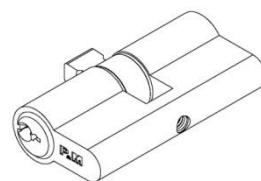


Lock Accessories

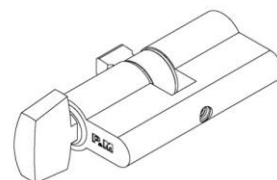
PL2 Lock Bolt



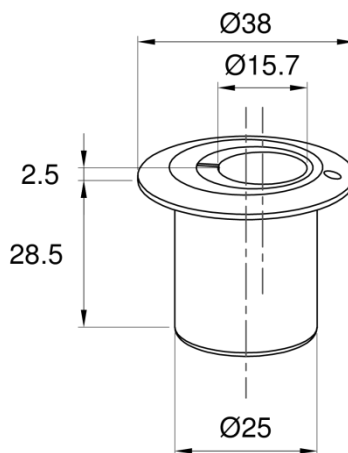
PM88 – Euro-Profile Key Cylinder
Available Length : (62mm, 42mm)



PM88T - Thumb Turn & Key Cylinder
Available Length :
(62mm, 28mm Thumb Turn Only)



9123M Door Strap

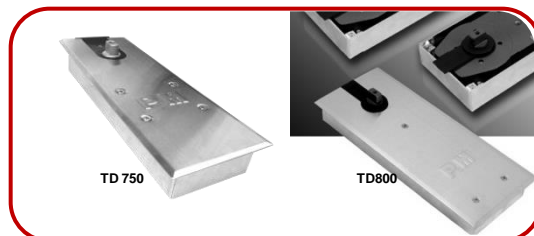


- DRM Door Rails are suitable for installation of extreme wide doors
- Glass preparation not required
- Complements the aesthetic façade of Glass panel.
- Rail cover available in various finishes
 - Polished Stainless Steel
 - Satin Stainless Steel
 - Brushed Satin Aluminium

Due to the company's policy of continuous product development and enhancement, the specifications and details contained in this brochure are subject to alteration without prior notice.

The dimensions, details, specifications and statements made herein or by our representatives arising out of any enquiries are given for information purposes only. They are not intended to have any legal effect and the company will not be bound thereby. The company will only accept obligations which are expressly negotiated for, and agreed and incorporated into written agreements made specifically with its respective customers.

Related Products



Door Closer – Floor Spring



Door Handles – Melosa Series



Latches & Lock – Alden Series